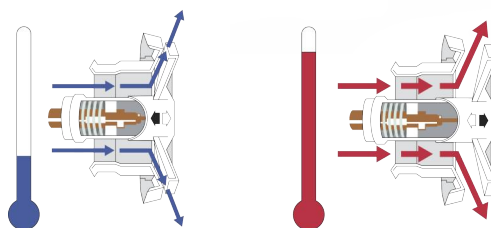
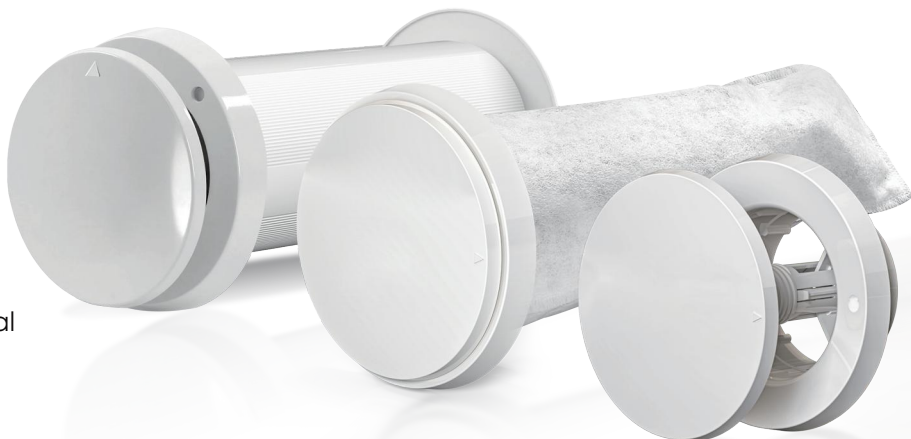


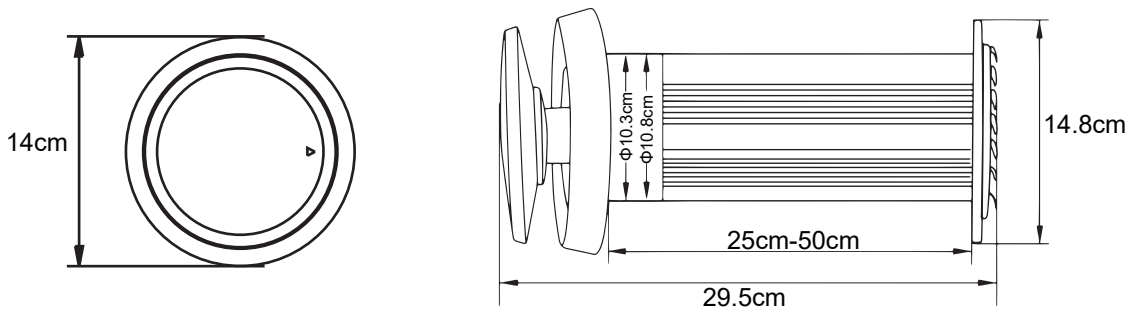
FRESH AIR VALVE WITH THERMOSTAT

Working Principle

Fresh air valve is equipped with a thermostat, the thermostat adjusts the valve's opening according to outdoor temperature to enhance energy efficiency. The valve will fully open at temperatures above +10 °C and fully close at temperatures below -5 °C. The thermostat operates based on thermal expansion. If needed, the valve can also be manually closed. No electrical connection required



Duct Size	Extendable Duct Length	Max Allowed Air Flow	Sound Level	Application Area
100mm	250-500mm	30m³/h	20-35dB	10m²



Explosive View

